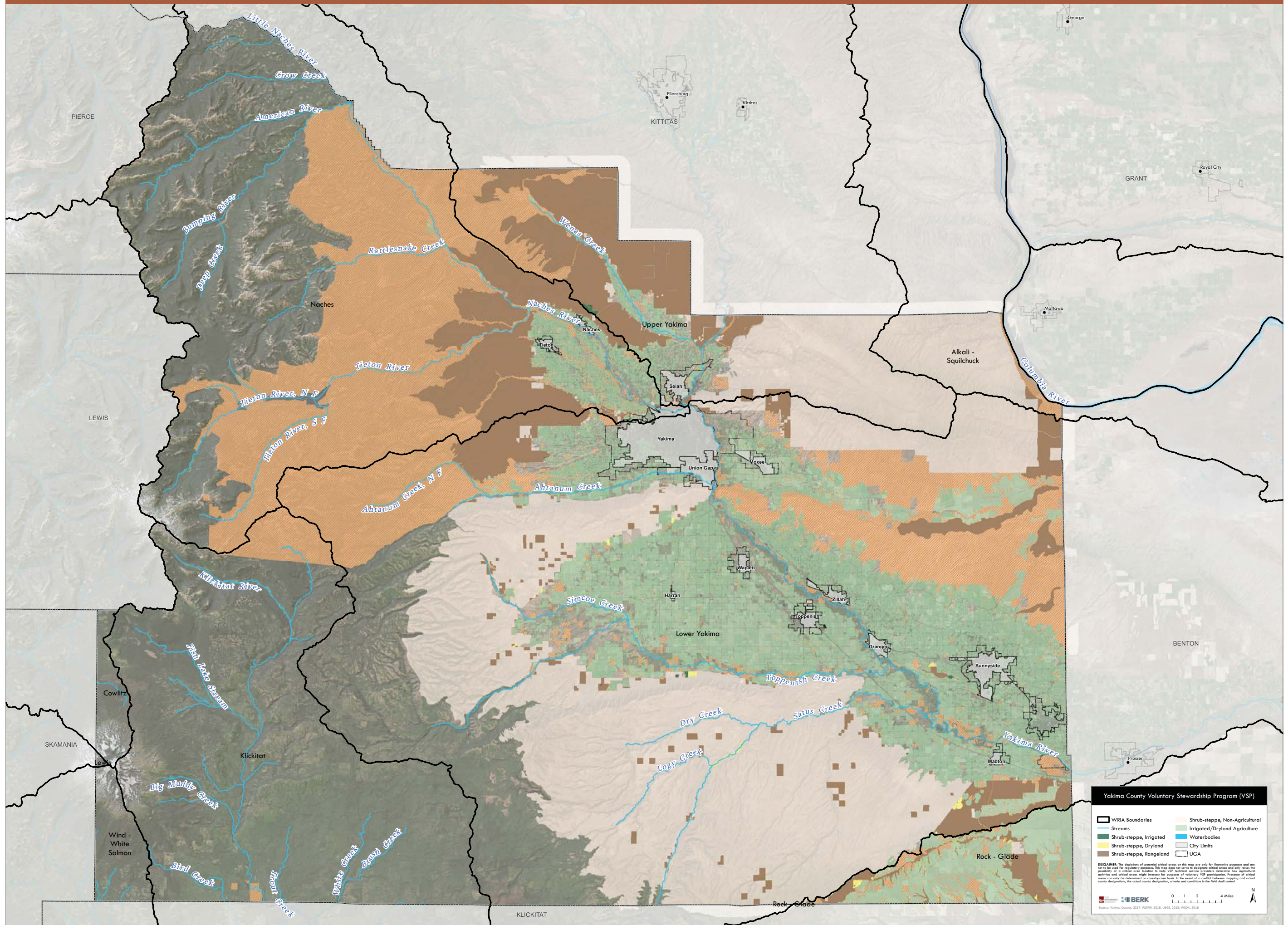


Shrub-Steppe Intersection with Agriculture and Rangelands in Yakima County



Yakima County Voluntary Stewardship Program (VSP)

WRIA Boundaries	Shrub-steppe, Non-Agricultural
Streams	Irrigated/Dryland Agriculture
Shrub-steppe, Irrigated	Waterbodies
Shrub-steppe, Dryland	City Limits
Shrub-steppe, Rangeland	UGA

DISCLAIMER: The designations of potential critical areas on this map are only for illustrative purposes and are not to be used for regulatory purposes. This map does not serve to delineate critical areas and only serves the possibility of a critical area location to help VSP technical service providers determine how agricultural activities and critical areas might interact for purposes of voluntary VSP participation. Presence of critical areas can only be determined on case-by-case basis. In the event of a conflict between mapping and actual county designations, the actual county designations, criteria and conditions in the field shall control.

Source: Yakima County, 2017; WSPN, 2016; USGS, 2015; WSDA, 2016

BERK

0 1 2 4 Miles

N