

EMERGENCY SUPPORT FUNCTION  
9: SEARCH AND RESCUE

**Coordinating:**

Yakima Sheriff's Office  
Yakima Valley Emergency Management

**Primary(s):**

Local Jurisdiction Fire Services (within jurisdiction limits)  
Yakima Sheriff's Office  
Yakima Valley Emergency Management

**Supporting:**

Amateur Radio (ARES/RACES)  
Civil Air Patrol  
Local Jurisdiction Fire Services  
Local Jurisdiction Law Enforcement  
National Weather Service  
Yakima County Coroner's Office

**Other Emergency Support Functions (ESFs) or Recovery Functions exist that coordinate with or support this ESF:**

- On the ESF Core Capabilities Matrix, find Primary core capabilities (P) within this ESF and then move vertically and add all Supporting (S) core capabilities and equate them to ESFs.
- Next find all Supporting (S) ESFs in the column and then move horizontally along each row of a Supporting (S) core capability to find all Primary (P) ESFs.

ESF 4	ESF 13
Response	
Supports	
ESF 9	

**1. Purpose**

- 1.1. Emergency Support Function #9 Search & Rescue (SAR) coordinates the elements of specialized lifesaving search and rescue operation in the event of a major disaster or emergency. Operational activities include locating, extricating, and providing on-site medical assistance to victims trapped in collapsed structures.

Shared Coordinating & Primary Core Capabilities	
Response Mission Area	
Mass Search & Rescue Operations	Deliver traditional and atypical search and rescue capabilities, including personnel, services, animals, and assets to survivors in need, with the goal of saving the greatest number of endangered lives in the shortest time possible.

Support Core Capabilities
None

EMERGENCY SUPPORT FUNCTION  
9: SEARCH AND RESCUE

**2. Policies**

- 2.1. The Yakima Sheriff's Office is responsible for search and rescue operations which includes searching for persons injured during emergencies and disasters.
- 2.2. [RCW 38.52.400 \(1\)](#) – The Incident Command System (ICS) shall be used for multi-agency/multi-jurisdiction Search and Rescue (SAR) operations.
- 2.3. SAR operations are initiated, coordinated, and directed by the Yakima County Sheriff's Office in accordance with state and local jurisdiction plans. However, one political subdivision may not be able to provide the necessary equipment or sufficient numbers of trained personnel to successfully carry out a SAR mission. Requests for additional resources including special skills, expertise, or equipment are coordinated by Washington State Military Department, Emergency Management Division (WEMD)/State Emergency Operations Center (SEOC).
- 2.4. Land and Urban SAR will normally be the responsibility of the Yakima County Sheriff's Office within Yakima County. [See [RCW 38.52.400\(1\)](#)]
- 2.5. [RCW 47.68.380](#) – Air SAR for missing or downed civil aircraft is the responsibility of the State Department of Transportation, which may involve the local Civil Air Patrol.
- 2.6. The local emergency management director shall work in a coordinating capacity directly supporting all search and rescue activities in that political subdivision and in registering emergency search and rescue workers for employee status.

**3. Situation Overview**

- 3.1. The wide range of and easy access to outdoor recreational activities in Yakima County and the growing number of people who participate in those activities results in a significant number of people becoming lost and/or injured or killed every year.
- 3.2. In situations that entail structural collapse, large numbers of people may require rescue and medical care. Because the mortality rate among trapped victims rises dramatically after 72 hours, Search and Rescue must be initiated without delay.
- 3.3. Rescue personnel may encounter extensive damage to the local infrastructure, such as buildings, roadways, public works, communications, and utilities. In some circumstances, rescue personnel may be at risk from terrorism, civil disorder or crime.
- 3.4. Large numbers of residents and volunteers may initiate activities to assist in SAR operations and may require coordination and direction.
- 3.5. Earthquake aftershocks, secondary events and/or other hazards (e.g. fires, landslides, flooding, and hazardous materials) may compound problems and further threaten disaster victims and rescue personnel.

## EMERGENCY SUPPORT FUNCTION

### 9: SEARCH AND RESCUE

- 3.6. Weather conditions such as temperature extremes, snow, rain, and high winds may pose additional hazards for disaster victims and rescue personnel.

#### 4. Concept of Operations

- 4.1. The chief law enforcement officer of a political subdivision (county, city or town) is responsible for local SAR operations. As such, the Yakima County Sheriff's Office (YSO) is responsible for SAR operations in the unincorporated areas of Yakima County and may, by agreement or upon request, support SAR operations in cities and towns within Yakima County.
- 4.2. Additional SAR resources may be requested through the State Emergency Management Division duty officer. The EMD duty officer provides the coordination for such outside resources.
- 4.3. If urban search and rescue capabilities are needed, this may be accomplished through mutual aid with existing jurisdictions which have the capability, or, if they are impacted by a major event, through a request to the state for additional resources from the National Urban Search and Rescue Response System (USAR).
- 4.4. **Whole Community Involvement:**
  - 4.4.1. ESF #9 partner agencies and organizations reflect the population of Washington in full spectrum. ESF #9 is supported by multiple local and state agencies, many of which have volunteer emergency worker programs to serve the residents and population within Yakima County.
  - 4.4.2. Local emergency management directors coordinate direct support for SAR operations in their political subdivisions and register volunteers in accordance with the provisions of Chapter 118-04 WAC. Local programs also provide training and education for volunteer SAR units as well as for the organization and deployment of SAR resources, to include Urban Search and Rescue (US&R), within the fire service.
  - 4.4.3. Many of the local agencies and organizations that support ESF #9 engage a wide range of stakeholders in program development and training operations, in accordance with and within the limitations of their respective enabling legal authorities, missions and funding sources. ESF #9 partner agencies routinely engage many other organizations in their day to day and training missions.
  - 4.4.4. This ESF communicates with the Whole Community as needed during emergency response and disaster recovery operations. The Whole Community includes populations with individuals with disabilities and Access and Functional Needs (AFN). Any agency or organization that receives federal funding is required to have a plan or policy for addressing the needs of individuals with Limited English Proficiency (LEP), pursuant to Title VI, the Civil Rights Act. The Washington State Emergency Management Division and this ESF expects all agencies and organizations to comply with federal law. For more information on how each agency or organization complies with federal law, please contact the individual agency or organization.

#### 4.5. Critical Tasks

EMERGENCY SUPPORT FUNCTION  
9: SEARCH AND RESCUE

Mission Area	Critical Task I.D.	Critical Tasks
Mass Search & Rescue Operations		
Response	1	Conduct search and rescue operations to locate and rescue persons in distress.
	2	Initiate community-based search and rescue support operations across a wide, geographically dispersed area.
	3	Ensure the synchronized deployment of local, regional, national, and international teams to reinforce ongoing search and rescue efforts and transition to recovery.

**5. Organization**

- 5.1. The ESF #9 position is staffed by the Yakima Sheriff’s Office. Personnel assigned to this position are approved by the Sheriff and the Office of Emergency Management Director, or designee. The ESF #9 position, when activated, operates in the Yakima County EOC and is a member of the Emergency Responders Branch within the Operations Section reporting to the Emergency Responders Branch Director or Operations Coordination Chief. This position is the link to the SAR operations in the field.
  
- 5.2. The ESF #9 position provides subject-matter expertise to other EOC positions. Based on potential need, this ESF may operate on a 24-hour basis. Supporting agencies have representatives available at the county EOC or by telephone on a 24-hour basis while ESF #9 is operational.

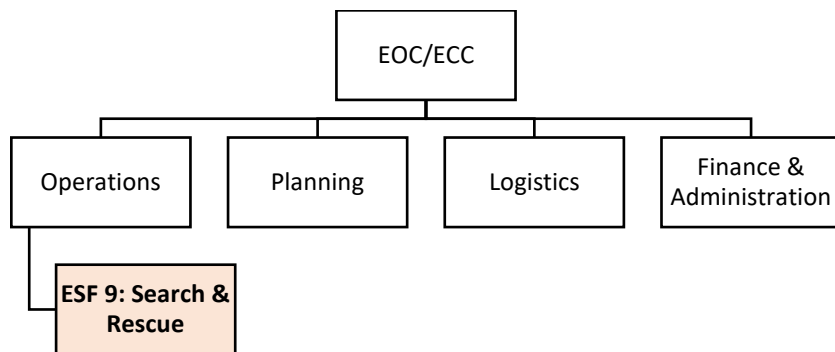


Figure 1: YCEOC, ESF #9, Organizational Chart Example

**6. Direction, Control, & Coordination**

- 6.1. Local government Incident Commanders (IC) where the emergency occurs will exercise tactical direction and control of disaster activities within that jurisdiction. The Yakima Sheriff’s Office will typically be the lead organization for search and rescue operations in unincorporated locations, especially in wildland areas. Fire departments/services will likely be the lead organization within any building structure areas or urban search and rescue scenarios.
  
- 6.2. The IC, or designee, will coordinate with YVEM, who is responsible for implementing the County Comprehensive Emergency Management Plan (CEMP). Each jurisdiction or coordinating organization shall establish Standard Operating Guidelines (SOGs) to control and direct response and recovery actions.

## EMERGENCY SUPPORT FUNCTION

### 9: SEARCH AND RESCUE

- 6.3. In cases where local resources to contend with an emergency do not exist or have been depleted, the affected IC, in coordination with Yakima Valley Emergency Management (YVEM), should request county aid first and then followed by state aid through the county and/or state EOCs, respectively. Resources made available to the local government will be under the operational control of the Chief Elected Official (CEO) or designee through the Incident Commander. When the resource mission is completed, the local ECC and Yakima County Emergency Operations Center (YCEOC)/Yakima Valley Emergency Management (YVEM) will be notified, and the resource returned for other assignment.
- 6.4. If the needed response exceeds these local capabilities, the CEO of the local jurisdiction may declare a “State of Emergency” to expedite access to resources needed to cope with the incident.
- 6.5. YVEM is responsible for the proper functioning of the YCEOC during emergency operations. YVEM also acts as a liaison with state and federal emergency agencies, and neighboring counties. The YCEOC is the central point for coordinating emergency response and potentially, recovery actions. The purpose of this central point is to ensure harmonious response when the emergency involves more than one political entity and several response agencies.
- 6.6. Department/agency heads and other officials legally administering their office may perform their emergency function(s) on their own initiative if, in their judgment, the safety or welfare of the population is threatened. The YCEOC and/or YVEM should be notified as soon as possible.

## **7. Information Collection, Analysis, & Dissemination**

- 7.1. Information collection regarding search and rescue operation status will be coordinated through ESF #9 and the YCEOC or other designated point as appropriate to the incident.
- 7.2. The local Incident Commander (IC) or designee is responsible for providing situation reports and periodic updates to keep the YCEOC informed. The YCEOC, ESF #9 Coordinator, or designee shall provide situation reports to local support agencies/jurisdiction ECCs and the Washington State Emergency Management Division (WAEMD) – State Emergency Operations Center (SEOC) as appropriate.
- 7.3. Jurisdiction, agency, private-sector, non-governmental, and volunteer organization representatives within the YCEOC will assist with meeting the information collection, analysis, and dissemination needs/methods of the JIC (if activated) and YCEOC. This will include maintaining contact with their local incident PIOs for reports and updates.
- 7.4. Some infrastructure services and information/requests (e.g. expenditures and entering into contracts) coming into the YCEOC may require a vetting process through the Policy Group and the YCEOC Manager due to legal, policy, ethical, or other concerns.
- 7.5. The YCEOC will be responsible for collection, analysis, and dissemination of the latest incident information and resources as depicted in Figure 2: YCEOC Information Collection, Analysis, and Dissemination Process example.

**EMERGENCY SUPPORT FUNCTION  
9: SEARCH AND RESCUE**

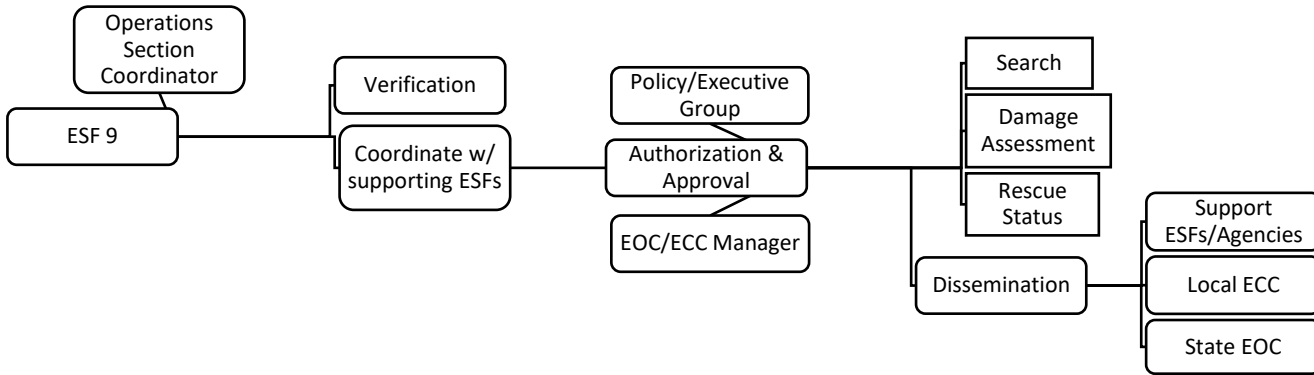


Figure 2: YCEOC Information Collection, Analysis, and Dissemination Process

**8. Responsibilities**

Response Mission Area			
Core Capability	Critical Task I.D.	Activity/Action	Organization(s) Name
Mass Search & Rescue Operations	1	Obtain an initial SAR situation and damage assessment through established intelligence procedures; determines the appropriate management response to meet the request for assistance.	Yakima Sheriff's Office
			YVEM
Mass Search & Rescue Operations	1	Aids in the aerial and ground SAR operations.	Civil Air Patrol
Mass Search & Rescue Operations	1	Provides weather data and forecasts to determine the potential feasibility and/or continuation of SAR activates.	National Weather Service
Mass Search & Rescue Operations	1	Provides communication linkages to or from the Yakima County EOC, as requested.	Amateur Radio (ARES/RACES)
Mass Search & Rescue Operations	1, 2	Provides personnel, resources and equipment to aid the search and rescue effort.	Yakima Sheriff's Office
			Local Jurisdiction Fire Services
			Local Jurisdiction Law Enforcement
Mass Search & Rescue Operations	2	Establish communication links with support agencies and field rescue units.	Yakima Sheriff's Office
			YVEM
Mass Search & Rescue Operations	2	Provide logistics support through the EOC for mobilizing resources for SAR.	YVEM

EMERGENCY SUPPORT FUNCTION  
9: SEARCH AND RESCUE

Response Mission Area			
Core Capability	Critical Task I.D.	Activity/Action	Organization(s) Name
<b>Mass Search &amp; Rescue Operations</b>	2	Ensure there are adequate, qualified representatives available to provide EOC shift-relief at appropriate intervals.	Yakima Sheriff's Office
			YVEM
<b>Mass Search &amp; Rescue Operations</b>	2	Coordinate public information through ESF #15 (Public Affairs).	Yakima Sheriff's Office
			YVEM
<b>Mass Search &amp; Rescue Operations</b>	2, 3	Determine availability of SAR teams throughout the county and in neighboring counties.	Yakima Sheriff's Office
			YVEM
<b>Mass Search &amp; Rescue Operations</b>	2, 3	Coordinate resource needs, and determines and resolves, as necessary, issues regarding resource shortages and resource ordering issues.	Yakima Sheriff's Office
			YVEM
<b>Mass Search &amp; Rescue Operations</b>	2, 3	Establish liaison with ESF #5 to facilitate the sharing of information.	Yakima Sheriff's Office
			YVEM
<b>Mass Search &amp; Rescue Operations</b>	2, 3	In coordination with ESF #8 (Public Health and Medical Services), assist in decedent recovery.	Yakima County Coroner's Office
<b>Mass Search &amp; Rescue Operations</b>	2, 3	Manage SAR teams and taskforces deployed within the county.	Yakima Sheriff's Office
			YVEM
<b>Mass Search &amp; Rescue Operations</b>	1, 2, 3	Act as the coordinating agent for all related resources; assist in development of operations assignments and assist in deployment.	Yakima Sheriff's Office
			YVEM

**9. Resource Requirements**

Resources	Providers
Desktop or Laptop	Yakima County EOC (may bring home agency laptop)
WebEOC login	Primary Agency/Organization
Contact list (phone & email) of organizations (master list)	Yakima County EOC or Home Agency/Organization
Internet and folder drive access	Yakima County EOC
Appropriate Home Agency/Org SOPs (hard & soft copies)	Primary Agency/Organization
Desk Phone	Yakima County EOC
Tiered communication structure with Incident Management Teams (IMT)	Yakima County EOC
Two-way Radio	Yakima County EOC or Home Organization

EMERGENCY SUPPORT FUNCTION  
9: SEARCH AND RESCUE

Training	Providers
E/G0191 (Emergency Operations Center/Incident Command System Interface)	Various locations (in-residence)
IS 100, 200, 700, 800	FEMA Emergency Management Institute (online)
ICS 300, 400	Various locations (in-residence)
Position training	Yakima Valley Emergency Management (YVEM)

**10. References and Supporting Plans**

- 10.1. ESF 4 – Firefighting, Yakima County CEMP
- 10.2. ESF 13 – Public Safety, Law Enforcement, and Security, Yakima County CEMP
- 10.3. [Washington State Comprehensive Emergency Management Plan \(CEMP\)](#)
- 10.4. [RCW 38.52.010 \(19\)](#) – Definition of “Search and rescue”
- 10.5. [RCW 38.52.400](#) – Powers and duties of local officials
- 10.6. [RCW 47.68.380](#) – Aerial search and rescue
- 10.7. [WAC 118-04-080](#) – Registering emergency workers
- 10.8. [Yakima Municipal Code, Chapter 6.06](#) – Emergency Powers of Mayor, City Council and City Manager

**11. Terms and Definitions**

- 11.1. Land Search and Rescue (SAR) – Conducts search, rescue, and recovery in land and wilderness environments through use of aircraft and ground vehicles for support, transportation, and evacuation in non-technical terrain.
- 11.2. Urban Search and Rescue (USAR) – Involves the location, rescue (extrication), and initial medical stabilization of individuals trapped in confined spaces. It is considered a "multi-hazard" discipline as it may be needed for a variety of emergencies or disasters. Structural collapse is most often the cause for people being trapped, but individuals may also be trapped in transportation accidents, mines, and collapsed trenches.
- 11.3. Air Search and Rescue (SAR) – The Washington Department of Transportation (WSDOT) is responsible for the coordination and management of aerial search and rescue within the state. This includes coordinating aircraft for disaster response & recovery when requested.