

December 2019 Spotlight

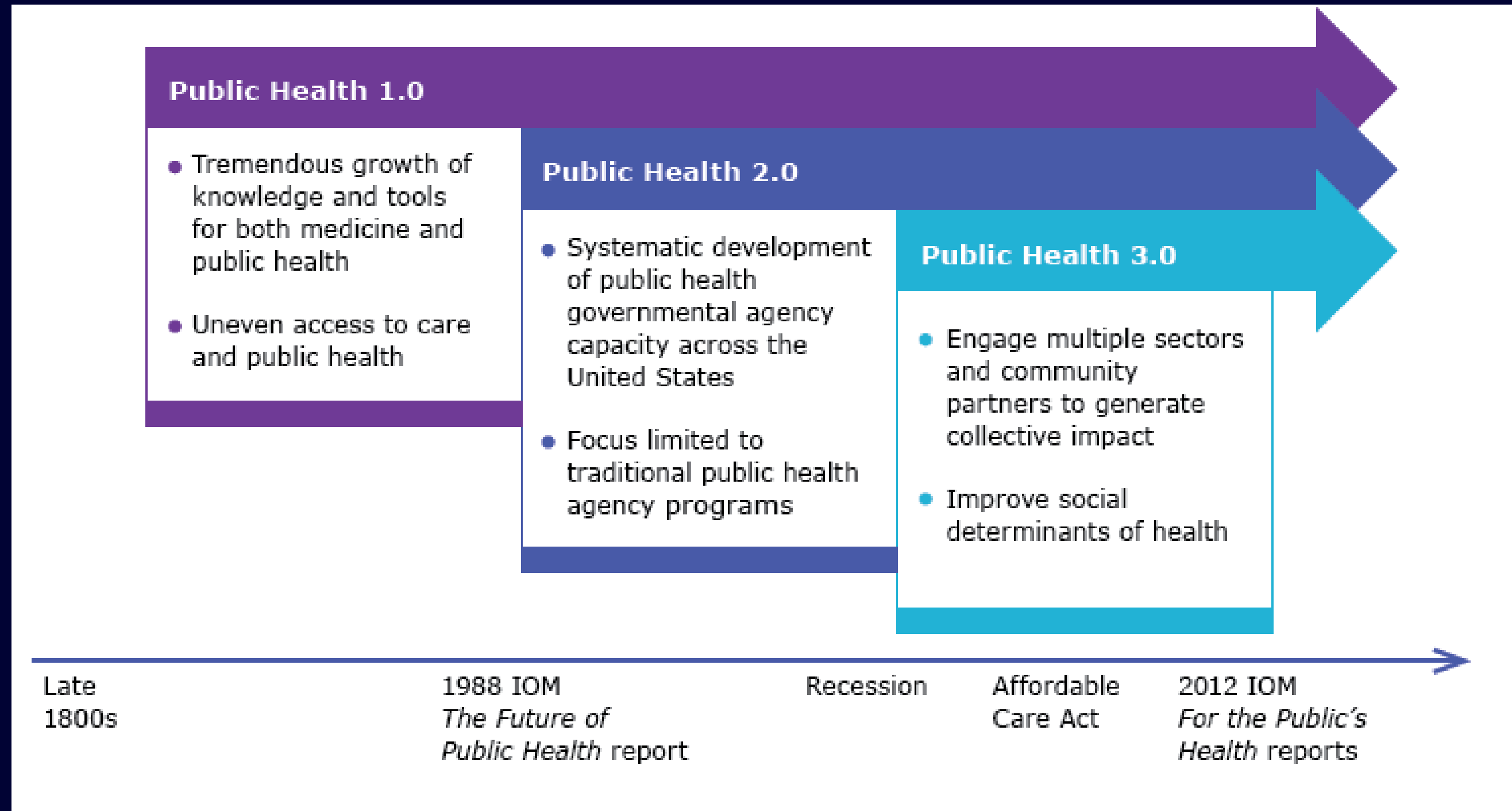


Transforming Local Public Health

Today's Presentation

- Public Health Models
- Snapshot of Yakima
- Rural Health Innovation Catalyst (RHIC)
- RHIC In Practice –Housing
- Future Implications

Public Health Transformation



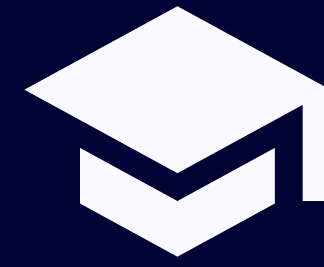
Community's Most Pressing Needs



Snapshot of Yakima County



21% severe housing problems



21% less than high school graduation



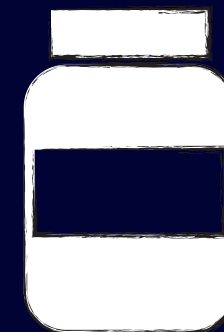
26% children living in poverty



20% of units with lead hazard



1,580 patients per 1 doctor



32% adults obese

Moving Forward



Current structure does not allow us to address the community's most pressing needs



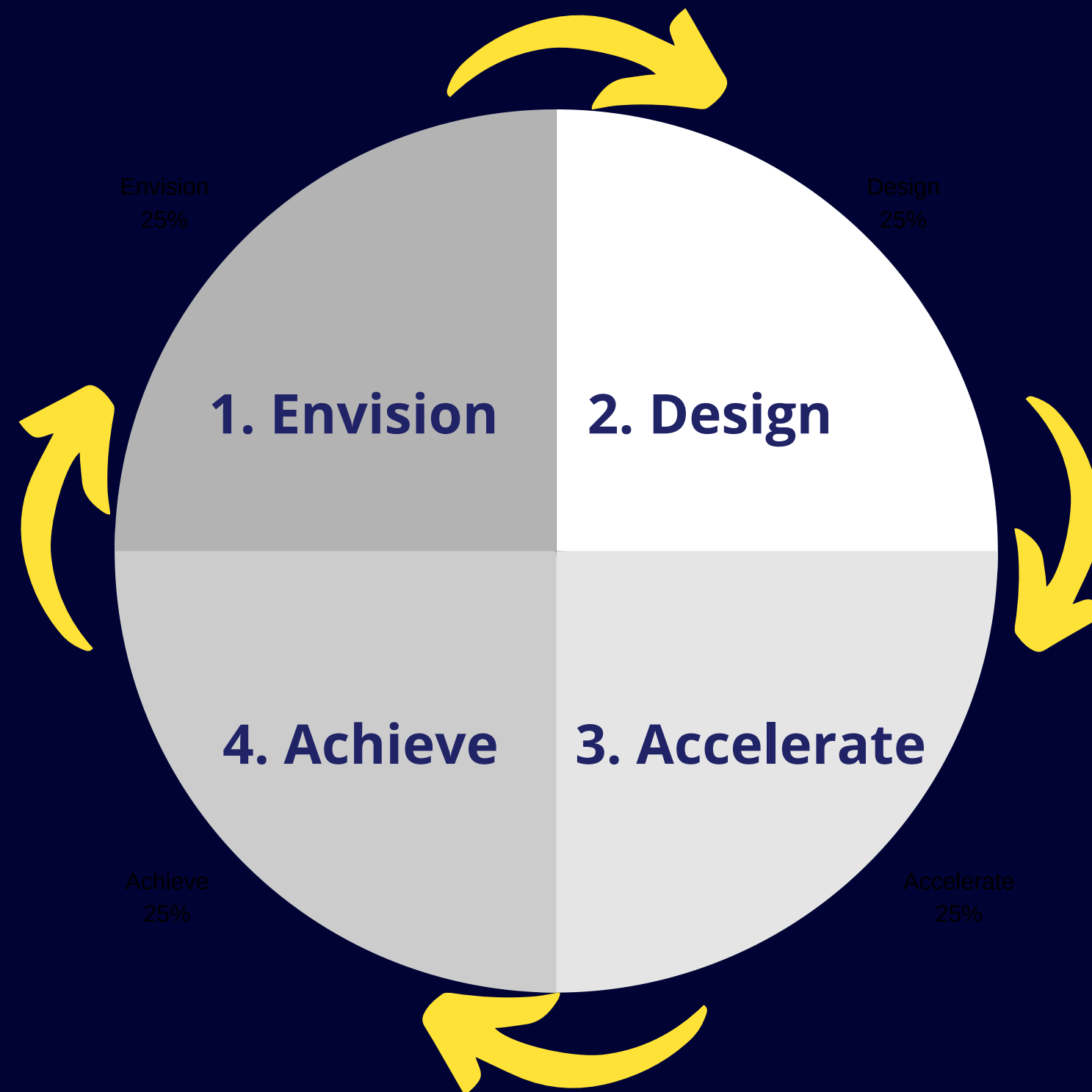
Current funds do not allow us to develop innovative strategies

**We must evolve to better serve our
community**

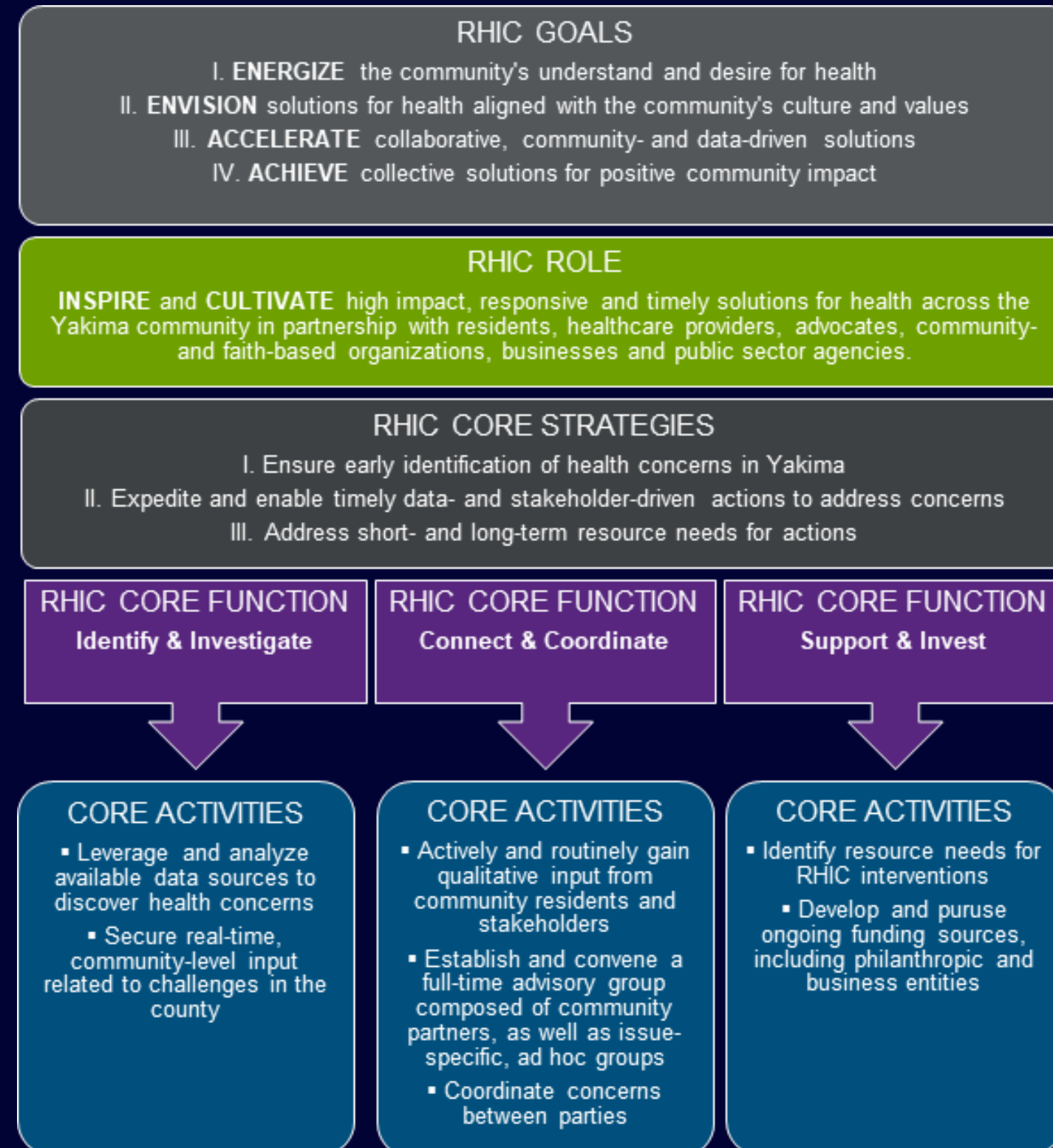
Rural Health Innovation Catalyst

Deliverables from the Kresge Foundation

Rural Health Innovation Catalyst



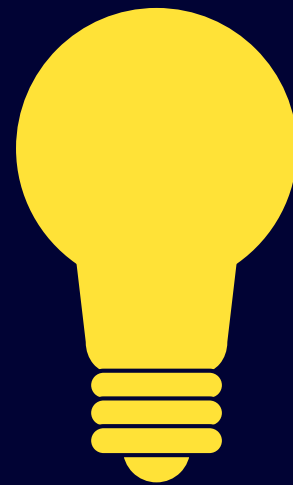
Rural Health Innovation Catalyst



Rural Health Innovation Catalyst



**Identify
and
Investigate**



**Connect
and
Coordinate**



**Support
and
Invest**

Housing

Intersections between housing and health



Identify & Investigate





Identify & Investigate

Housing Quality, Affordability, Location, and Surrounding Social and Community Attributes Are Important to Health

Links between housing and health





Identify & Investigate



0.8% vacancy rate (2018)

638 homeless (2018)



32% renters cost-burdened (2012)

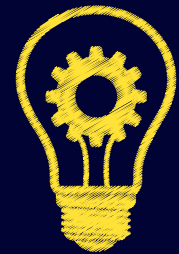


49% home-owners cost-burdened (2012)



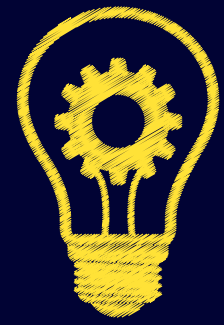
Identify & Investigate

- ↑ Increase in visibility of homelessness issues
- ↑ Increase in temporary worker population
- ↑ Increase in communicable disease burden
- ↓ Decrease in affordable housing stock



Connect & Coordinate





Connect & Coordinate



Mental Health Tax to assist with emergency housing for homeless



Planning grant for systems approach work to housing



Support & Invest



Provide cross-sector analysis of work being done across the county



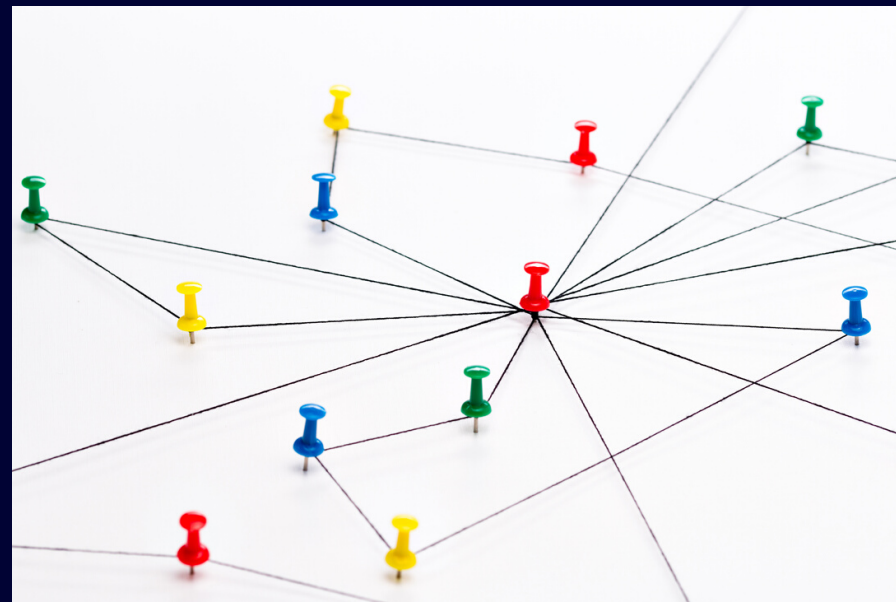
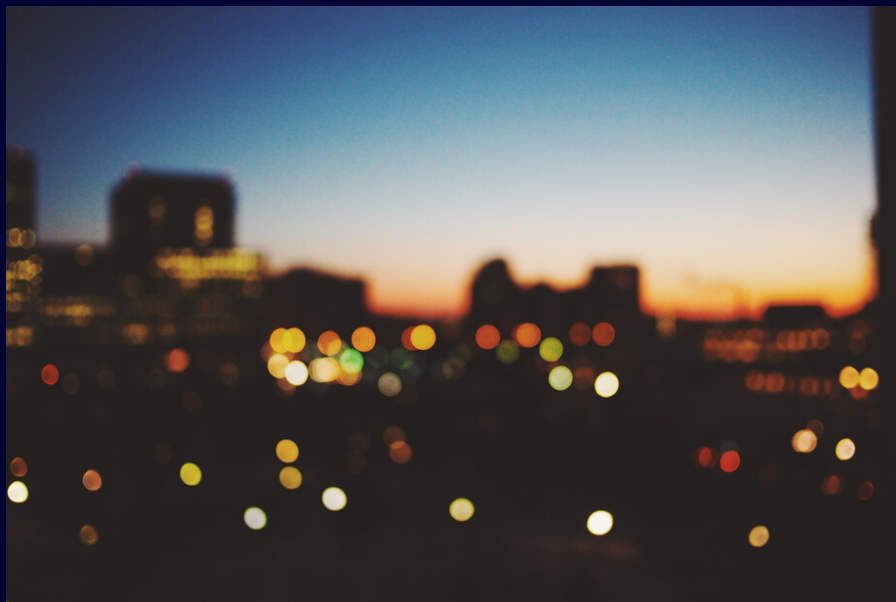
Research and procure best practices on selected strategies



Assist with securing funds to help mobilize the initiative

Future Implications

- Developing a replicable model that can be used in urban and rural settings both in our community and across the country
- Well positioned to receive future investments due to our unique span of issues to address



Questions?
