

GENERAL NOTES

- 200 AMP TYPE 120/240 1Ø SERVICE CABINET
1. SEE STANDARD SPECIFICATION 9-29.24, SERVICE CABINETS.
2. HINGES SHALL HAVE STAINLESS STEEL DR BRASS PINS.
3. CABINETS SHALL BE RATED NEMA 3R AND SHALL INCLUDE TWO RAIN TIGHT VENTS.
4. METERING EQUIPMENT DOOR SHALL BE PAD LOCKABLE. EACH DOOR SHALL BE GASKETED. INSTALL BEST CX CONSTRUCTION CORE ON RIGHT DOOR. SEE DOOR HINGE DETAIL, SHEET 1 OF 2.
5. THE FOLLOWING EQUIPMENT WITHIN THE SERVICE ENCLOSURE SHALL HAVE AN APPROPRIATELY ENGRAVED PHENOLIC NAME PLATE ATTACHED WITH SCREWS OR RIVETS: KEY NUMBERS 2, 3, 4, 6, 7, 8, 9 AND 16. KEY NUMBER 4 NAME PLATE SHALL READ: 'PHOTOCELL BYPASS TEST ON' AND 'PHOTOCELL TEST OFF- AUTOMATIC'. SEE SERVICE CABINET DETAIL.
6. METERING ARRANGEMENTS VARY WITH DIFFERENT SERVING UTILITIES. THE CONTRACTOR SHALL VERIFY THE SERVING UTILITY'S REQUIREMENTS PRIOR TO FABRICATION OF AND INSTALLING THE SERVICE EQUIPMENT.
7. DIMENSIONS SHOWN ARE MINIMUM AND SHALL BE ADJUSTED TO ACCOMMODATE THE VARIOUS SIZES OF EQUIPMENT INSTALLED.
8. ALL BUSSWORK SHALL BE HIGH GRADE COPPER AND SHALL EQUAL OR EXCEED THE MAIN BREAKER RATING. ALL BREAKERS SHALL BOLT ONTO THE BUSSWORK. JUMPERING OF BREAKERS SHALL NOT BE ALLOWED. BUSSWORK SHALL ACCOMMODATE ALL FUTURE EQUIPMENT AS SHOWN IN THE BREAKER SCHEDULE.
9. THE PHOTOCELL UNIT SHALL BE CENTERED IN THE PHOTOCELL ENCLOSURE TO PERMIT 360 DEGREE ROTATION OF THE PHOTOCELL WITHOUT REMOVAL OF THE PHOTOCELL UNIT OR THE PHOTOCELL ENCLOSURE.
10. ALL INTERNAL WIRE RUNS SHALL BE IDENTIFIED WITH "TO - FROM" CODED TAGS LABELED WITH THE CODE LETTERS AND/OR NUMBERS SHOWN ON THE SCHEDULES. APPROVED PVC OR POLYOLEFIN WIRE MARKING SLEEVES SHALL BE USED.
11. ALL NUTS, BOLTS AND WASHERS USED FOR MOUNTING THE PHOTOCELL ENCLOSURE SHALL BE STAINLESS STEEL.
12. A 1/8" TOLERANCE IS ALLOWED FOR ALL DIMENSIONS.
13. UNISTRUT TYPE CHANNEL AND MOUNTING HARDWARE COMPONENTS SHALL BE STAINLESS STEEL. CONDUIT CLAMPS SHALL BE HOT DIPPED, GALVANIZED STEEL OR STAINLESS STEEL.
14. THE METER BASE PORTION OF THIS SERVICE WAS DESIGNED TO MEET METERING PORTION OF EUSERC DRAWING 305 REQUIREMENTS.
15. WHEN USING ALTERNATE DOOR HINGE: REMOVE HINGE PIN PRIOR TO WELDING HINGE TO CABINET AND PRIOR TO HOT DIP GALVANIZING CABINET. AFTER GALVANIZING, REPLACE PIN WITH BRASS PIN AND SOLDER IN PLACE.
16. VERIFY THE SERVICE UTILITY STAND-OFF DIMENSION. ADJUST THE REMOVABLE PANEL TO THE MEASUREMENT PROVIDED BY THE UTILITY COMPANY. AFTER ADJUSTMENT, CUT OFF ALL-THREAD BOLTS SO THAT NO LESS THAN 2 AND NO MORE THAN 3 FULL THREADS EXTEND PAST THE FACE OF THE NUTS
17. CONDUIT FOR SERVICE SHALL BE AS REQUIRED BY SERVING UTILITY. IF NO REQUIREMENT, CONDUIT SHALL BE 3" RGS.

CONSTRUCTION NOTES

- ① METER BASE PER SERVING UTILITY REQUIREMENTS. AS A MINIMUM, THE METER BASE SHALL BE SAFETY SOCKET BOX WITH FACTORY INSTALLED TEST BYPASS FACILITY THAT MEETS THE REQUIREMENTS OF EUSERC DRAWING 305.
- ② MAIN BREAKER (SEE BREAKER SCHEDULE)
- ③ PHOTOCELL BREAKER (SPST 15 AMP - 120/240 VOLT)
- ④ TEST SWITCH (SPDT SNAP ACTION, POSITIVE CLOSE 15 AMP - 120/277 VOLT - "T" RATED)
- ⑤ PHOTOELECTRIC CONTROL, STD. SPEC. 9 - 29.11(2)
- ⑥ BRANCH BREAKER (SEE BREAKER SCHEDULE)
- ⑦ SIGNAL BREAKER (SEE BREAKER SCHEDULE)
- ⑧ CONTACTOR (SEE BREAKER SCHEDULE)
- ⑨ RECEPTACLE BREAKER (SPST 20 AMP - 120/240 VOLT)
- ⑩ RECEPTACLE, GROUNDED (GFCI 20 AMP - 125 VOLT)
- ⑪ NEUTRAL BUSS, 14 LUG COPPER
- ⑫ PHOTOCELL ENCLOSURE - ENCLOSURE TO BE FABRICATED FROM 5/8" EXPANDED STEEL MESH WITH WELDED SEAMS AND MOUNTING FLANGES. HOT DIP GALVANIZED AFTER FABRICATION. TYPE 5052 - H32 ALUMINUM WITH 5/8" x 5/8" OPENINGS EQUIVALENT TO 5/8" EXPANDED STEEL MESH MAY BE USED AS ALTERNATIVE MATERIAL. SEE PHOTOCELL ENCLOSURE MOUNTING DETAIL, SHEET 2 OF 2. PHOTOCELL SHALL BE INSTALLED FACING NORTH.
- ⑬ HINGED FRONT FACING DOOR WITH 4" x 4" MIN. POLISHED WIRE GLASS WINDOW.
- ⑭ RIGHT HINGED DEAD FRONT WITH 1/4 TURN FASTENERS OR SLIDE LATCH.
- ⑮ CABINET MAIN BONDING JUMPER. BUSS SHALL BE 4 LUG TINNED COPPER. SEE CABINET MAIN BONDING JUMPER DETAIL ON SHEET 2 OF 2.
- ⑯ SPARE BRANCH BREAKER (DPST 20AMP- 120/240 VOLT)
- ⑰ METAL WIRING DIAGRAM HOLDER
- ⑱ 1/4" DIAMETER DRAIN HOLE. DRILL BEFORE GALVANIZING.
- ⑲ MOUNTING HOLE. SEE SERVICE CABINET MOUNTING DETAILS.
- ⑳ 18 CIRCUIT PANEL BOARD - MINIMUM SIZE WITH SEPARATE MAIN BREAKER.
- ㉑ LABEL CABINET WITH BUSSWORK RATING.

BREAKER SCHEDULE

COMPONENT SCHEDULE YAKIMA COUNTY MODIFIED (MODIFIED) TYPE "B" SERVICE

- ① METERBASE: 100 AMP, 4 JAW, AW #114TB SAFETY SOCKET (CONTRACTOR TO VERIFY WITH SERVING UTILITY)
- ② PANELBOARD: 120/240 VAC, 125 AMP, 1 PHASE, 3 WIRE, COPPER BUS, 12 CKT, BOLT ON BREAKERS.
 MAIN BREAKER, 100 AMP, 2 POLE
 1-20/2 ILLUMINATION BRANCH
 2-20/2 SPARE BRANCH
 1-50/1 SIGNAL BRANCH
 1-15/1 CONTROL CIRCUIT BRANCH
 1-20/1 GROUND FAULT RECEPTACLE BRANCH
- ③ CONTACTOR: 30A 4 POLE, 120 VAC COIL. 1 REQUIRED
- ④ PHOTO ELECTRIC CELL: 120 VAC, TWIST LOCK, TYCO ELECTRONICS CORP WITH 6" X 6" WIRE MESH GUARD.
- ⑤ PHOTO CELL BYPASS SWITCH, SPST, 15 AMP, 277 VAC.
- ⑥ GROUND FAULT RECEPTACLE: 20 AMP, 120 VAC, DUPLEX.

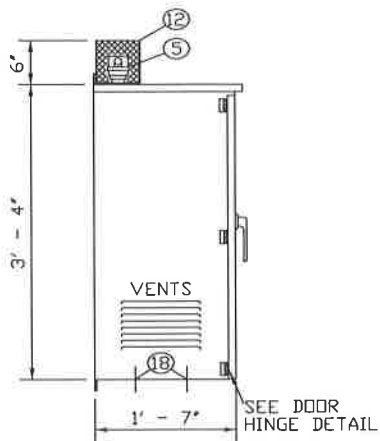
ELECTRICAL SERVICE CABINET DETAILS



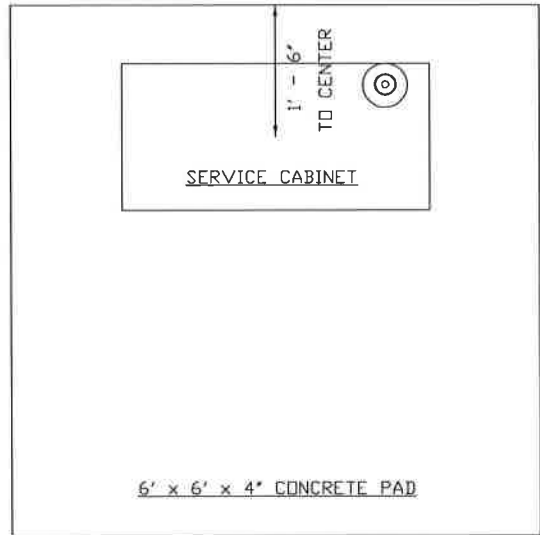
APPROVED BY: [Signature]
 County Engineer: _____ DATE: 11/16/16

REVISION:	DESCRIPTION:	DATE:

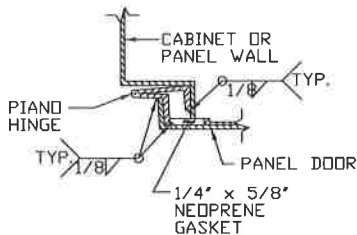
STANDARD PLAN
S-8
 SHEET 1 OF 3



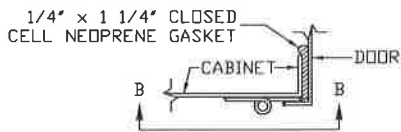
LEFT SIDE



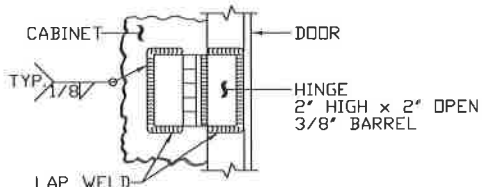
TOP VIEW



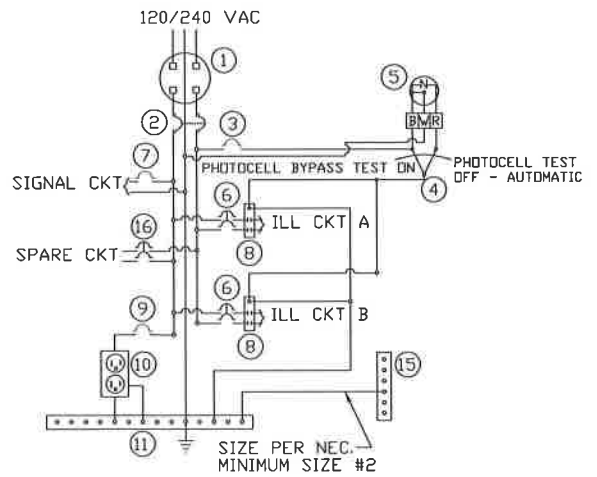
DOOR HINGE DETAIL



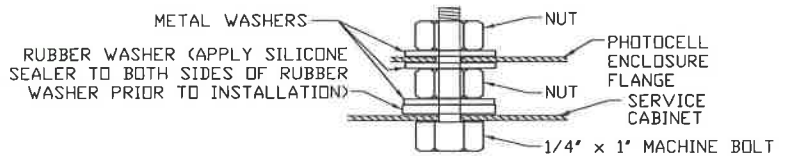
DOOR HINGE DETAIL
ALTERNATE FOR TYPE B MODIFIED CABINET
SEE NOTE 17



VIEW B-B



WIRING SCHEMATIC
MODIFIED (MOD.) TYPE B SERVICE
120V / 240V SINGLE PHASE, 3 WIRE



PHOTOCELL ENCLOSURE MOUNTING DETAIL

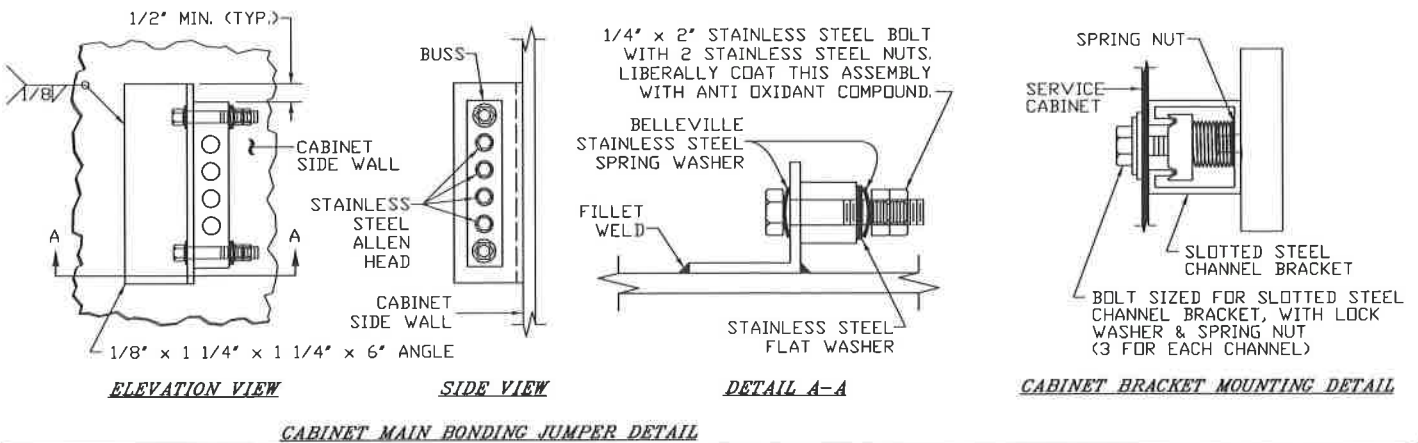
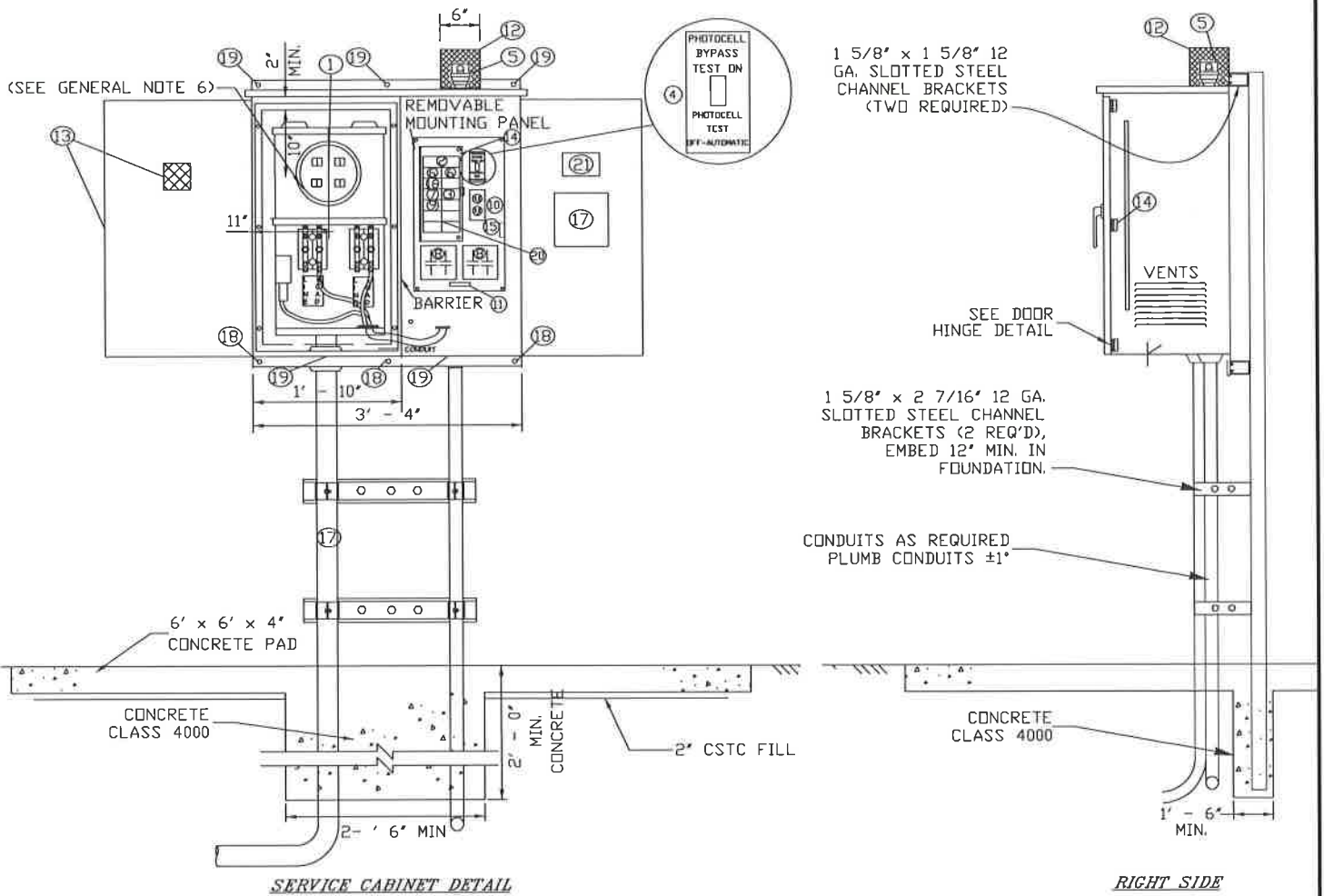
ELECTRICAL SERVICE CABINET DETAILS



APPROVED BY: *[Signature]*
 County Engineer: _____ DATE: 11/16/16

REVISION:	DESCRIPTION:	DATE:

STANDARD PLAN
S-8
 SHEET 2 OF 3



ELECTRICAL SERVICE CABINET DETAILS



APPROVED BY:

County Engineer:

DATE:

REVISION:

DESCRIPTION:

DATE:

STANDARD PLAN

S-8

SHEET 3 OF 3