

APPROVED AS NOTED

COUNTY ROAD ENGINEER

YAKIMA COUNTY WASHINGTON

DATE 4/11/2023

BY [Signature]

www.invarion.com

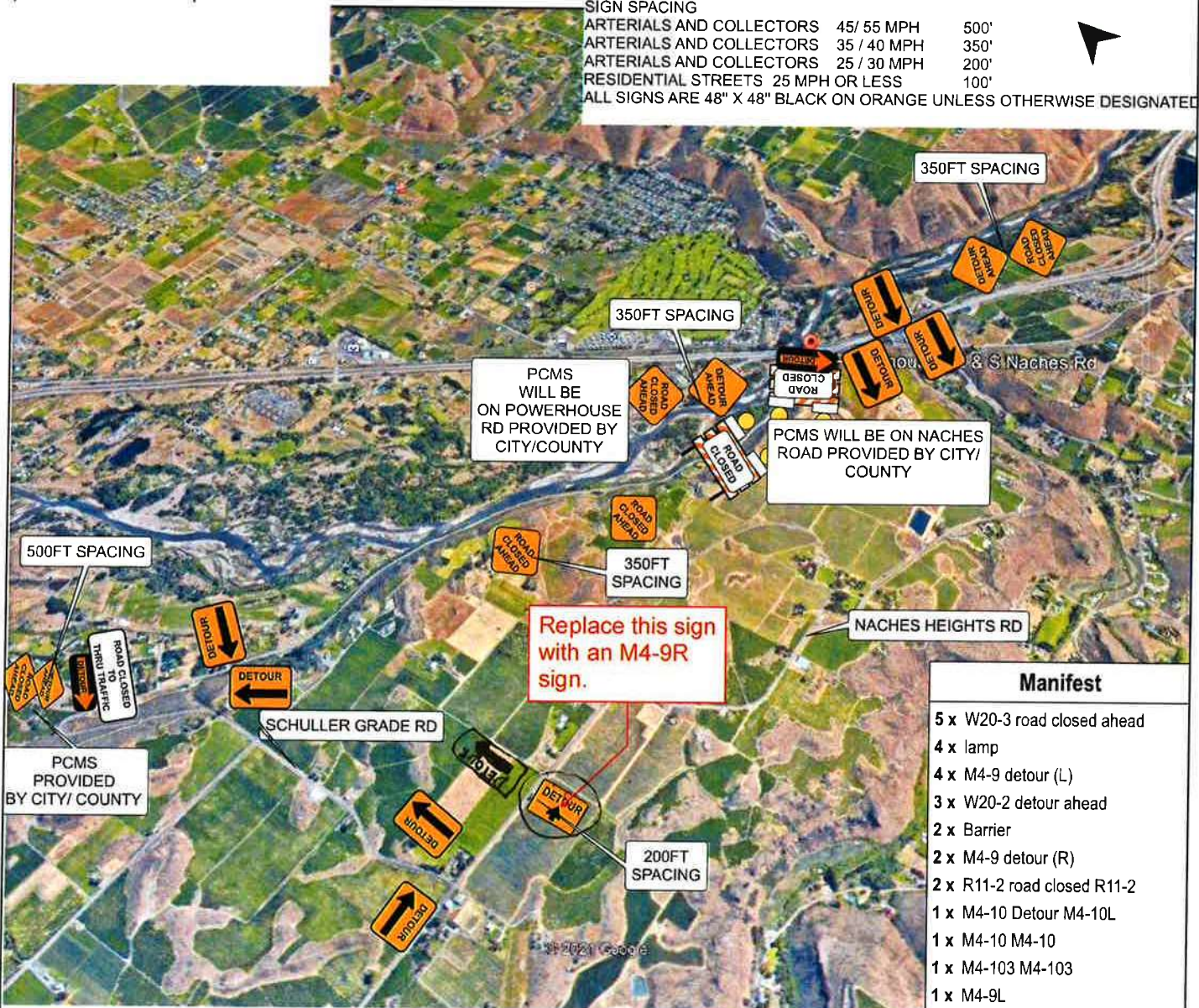
Date: 6/22/2021 **Author:** RAY MIRELEZ **Project:** S NACHES RD CLOSURE NORTHBANK

Comments:

THIS TRAFFIC CONTROL PLAN IS TO PROVIDE A ROAD CLOSURE FOR CREW TO COMPLETE SCOPE OF WORK ALL SIGNS AND DEVICES WILL BE ACCORDANCE WITH MUTCD



SIGN SPACING		
ARTERIALS AND COLLECTORS	45 / 55 MPH	500'
ARTERIALS AND COLLECTORS	35 / 40 MPH	350'
ARTERIALS AND COLLECTORS	25 / 30 MPH	200'
RESIDENTIAL STREETS	25 MPH OR LESS	100'
ALL SIGNS ARE 48" X 48" BLACK ON ORANGE UNLESS OTHERWISE DESIGNATED		



-Date and time frame of closure will be coordinated with city minimum 7 calendar days prior to closure.
 -Joy Holtzinger will be contacted prior to closure @ 509-574-2396