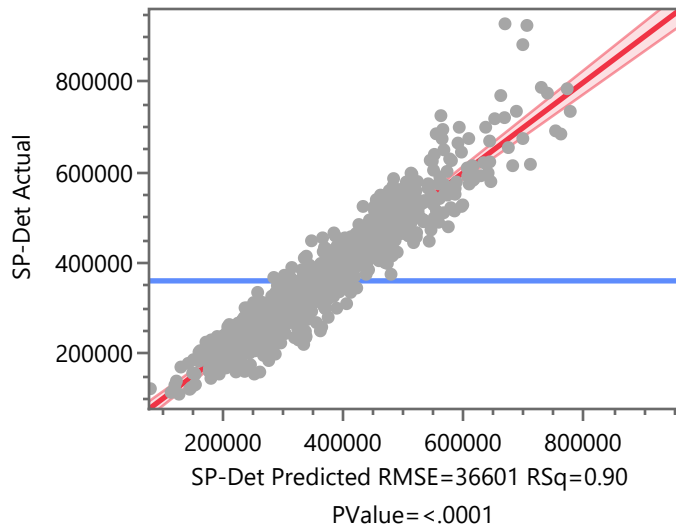
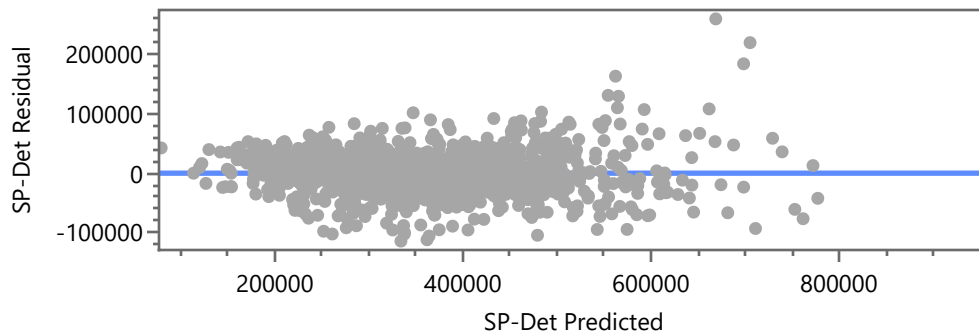
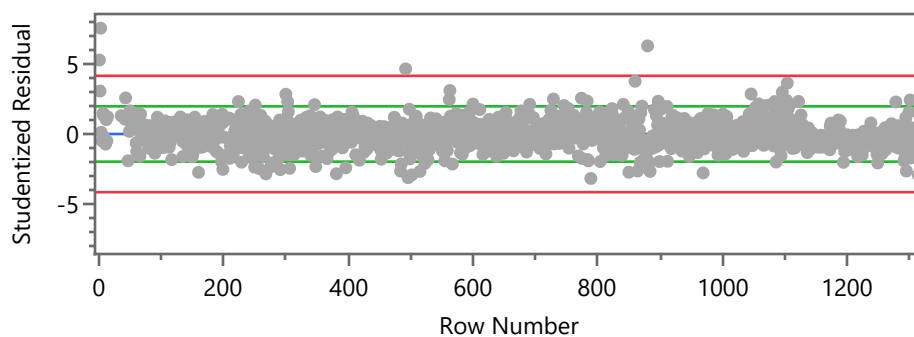


**Response SP-Det****Actual by Predicted Plot****Effect Summary**

Source	Logworth	PValue
Date Prior to Assessment	150.298	0.00000
MainFn	65.131	0.00000
FnBsmt	49.925	0.00000
UpprFn	43.919	0.00000
AttGar	24.920	0.00000
LnAcres	23.226	0.00000
EffAge	16.276	0.00000
Cnd	14.611	0.00000
TempNbhd	14.189	0.00000
Qlty	10.450	0.00000
BltinGar	9.155	0.00000
Fixtures	6.972	0.00000
AddFn	3.572	0.00027
CovPrchSf	3.491	0.00032
UnfinBsmt	2.182	0.00658

**Lack Of Fit**

Source	DF	Sum of Squares	Mean Square	F Ratio
Lack Of Fit	1250	1.6771e+12	1.3417e+9	32.0824
Pure Error	2	83640264.5	41820132	<b>Prob &gt; F</b>
Total Error	1252	1.6772e+12		<b>0.0307*</b>
			<b>Max RSq</b>	1.0000

**Response SP-Det****Residual by Predicted Plot****Studentized Residuals**

Externally studentized residuals with 95% simultaneous limits (Bonferroni) in red, individual limits in green.

**Summary of Fit**

RSquare	0.899958
RSquare Adj	0.897801
Root Mean Square Error	36600.71
Mean of Response	360441.3
Observations (or Sum Wgts)	1280

**Analysis of Variance**

Source	DF	Sum of Squares	Mean Square	F Ratio
Model	27	1.5088e+13	5.588e+11	417.1401
Error	1252	1.6772e+12	1.3396e+9	<b>Prob &gt; F</b>
C. Total	1279	1.6765e+13		<b>&lt;.0001*</b>

**Parameter Estimates**

Term	Estimate	Std Error	t Ratio	Prob> t
Intercept	134041.86	53126.18	2.52	<b>0.0118*</b>
Date Prior to Assessment	-103.1511	3.414676	-30.21	<b>&lt;.0001*</b>
LnAcres	26780.795	2599.14	10.30	<b>&lt;.0001*</b>
TempNbhd[WV1]	-15492.91	3258.722	-4.75	<b>&lt;.0001*</b>
TempNbhd[WV2]	-31800.87	4403.19	-7.22	<b>&lt;.0001*</b>
Qty[F-F-]	78699.584	37360.47	2.11	<b>0.0354*</b>
Qty[F+-F]	10264.481	8536.011	1.20	0.2294
Qty[A-F+]	-4051.905	5282.716	-0.77	0.4432

**Response SP-Det****Parameter Estimates**

<b>Term</b>	<b>Estimate</b>	<b>Std Error</b>	<b>t Ratio</b>	<b>Prob&gt; t </b>
Qlty[A+-A]	-335.1111	3373.4	-0.10	0.9209
Qlty[G-A+]	10447.188	3079.794	3.39	0.0007*
Qlty[G+-G]	17226.345	5530.217	3.11	0.0019*
Qlty[V-G+]	40503.721	9299.452	4.36	<.0001*
Qlty[V+-V]	28203.992	14815.95	1.90	0.0572
Cnd[FR-PR]	13345.186	37900.9	0.35	0.7248
Cnd[AV-FR]	48740.296	8151.903	5.98	<.0001*
Cnd[GD-AV]	15552.237	2866.903	5.42	<.0001*
Cnd[VG-GD]	7609.1095	4472.718	1.70	0.0891
Cnd[EX-VG]	-948.5583	4447.244	-0.21	0.8311
EffAge	-1114.253	131.0804	-8.50	<.0001*
MainFn	75.212603	4.132313	18.20	<.0001*
UpprFn	59.64281	4.087946	14.59	<.0001*
AddFn	47.103085	12.88853	3.65	0.0003*
UnfinBsmnt	16.638983	6.113028	2.72	0.0066*
FnBsmnt	56.155324	3.584382	15.67	<.0001*
Fixtures	4322.4697	808.5422	5.35	<.0001*
AttGar	63.206146	5.904719	10.70	<.0001*
BltinGar	53.484768	8.606265	6.21	<.0001*
CovPrchSf	39.546345	10.96525	3.61	0.0003*

**Response SP-Det****Prediction Expression**

134041.85865

+ -103.1510854 • Date Prior to Assessment

+ 26780.795067 • LnAcres

$$+ \text{Match}(\text{TempNbhd}) \begin{pmatrix} \text{"WV1"} \Rightarrow -15492.90963 \\ \text{"WV2"} \Rightarrow -31800.86791 \\ \text{"WVAT"} \Rightarrow 47293.777544 \\ \text{else} \Rightarrow . \end{pmatrix}$$

$$+ \text{Match}(\text{Qty}) \begin{pmatrix} \text{"F-"} \Rightarrow 0 \\ \text{"F"} \Rightarrow 78699.583585 \\ \text{"F+"} \Rightarrow 88964.064363 \\ \text{"A"} \Rightarrow 84912.158947 \\ \text{"A+"} \Rightarrow 84577.047888 \\ \text{"G"} \Rightarrow 95024.235688 \\ \text{"G+"} \Rightarrow 112250.58088 \\ \text{"V"} \Rightarrow 152754.30184 \\ \text{"V+"} \Rightarrow 180958.29358 \\ \text{else} \Rightarrow . \end{pmatrix}$$

$$+ \text{Match}(\text{Cnd}) \begin{pmatrix} \text{"PR"} \Rightarrow 0 \\ \text{"FR"} \Rightarrow 13345.186492 \\ \text{"AV"} \Rightarrow 62085.482669 \\ \text{"GD"} \Rightarrow 77637.719572 \\ \text{"VG"} \Rightarrow 85246.829084 \\ \text{"EX"} \Rightarrow 84298.27083 \\ \text{else} \Rightarrow . \end{pmatrix}$$

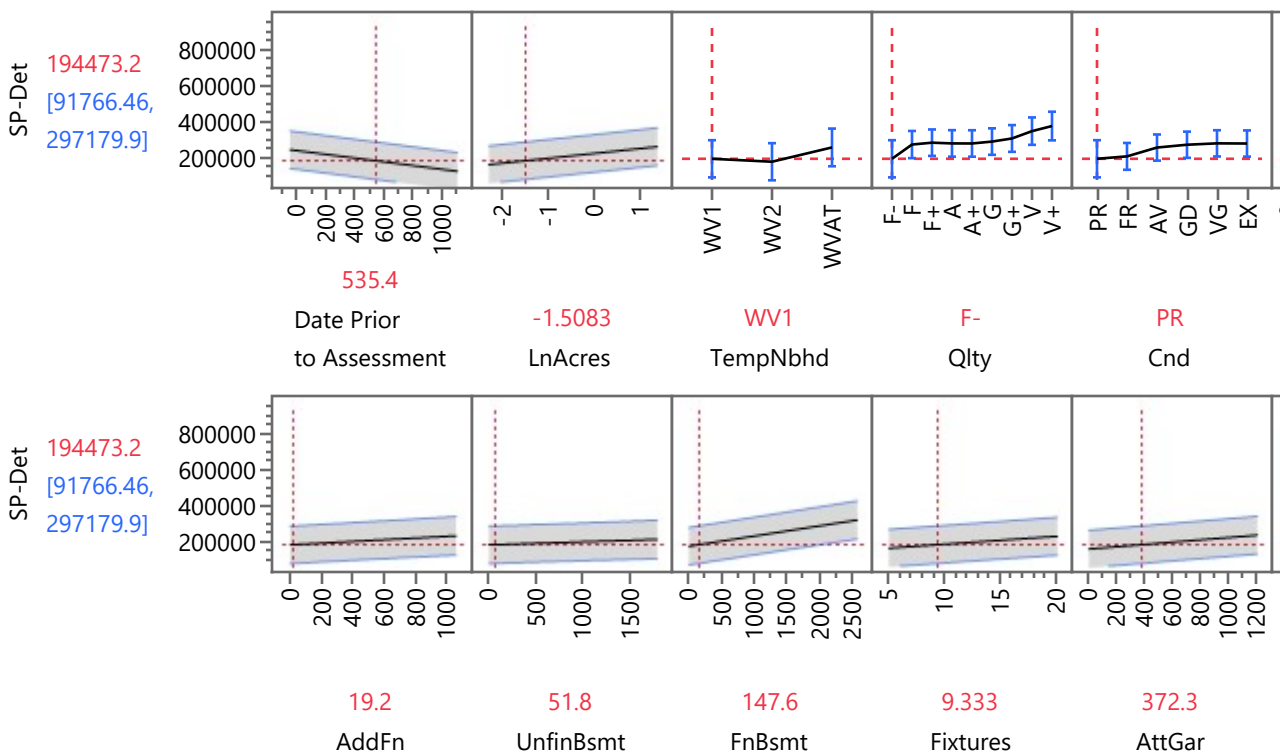
+ -1114.252866 • EffAge

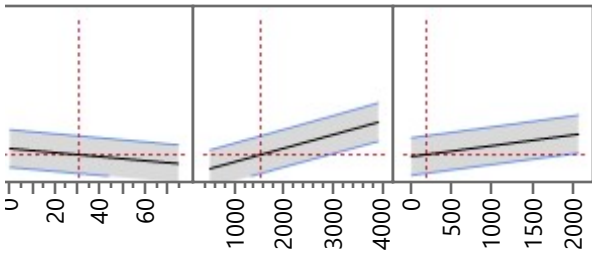
+ 75.212603436 • MainFn

+ 59.642809693 • UpprFn

**Response SP-Det****Prediction Expression**

+ 47.103084691 • AddFn  
+ 16.638982866 • UnfinBsmt  
+ 56.155324482 • FnBsmt  
+ 4322.4697267 • Fixtures  
+ 63.206146047 • AttGar  
+ 53.484767907 • BltinGar  
+ 39.54634522 • CovPrchSf

**Prediction Profiler**



30.169

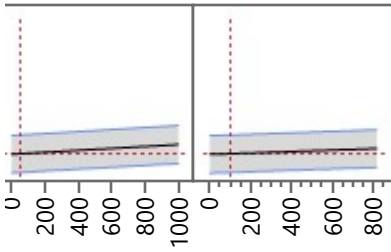
EffAge

1522

MainFn

169.4

UpprFn



51.12

BltinGar

99.16

CovPrchSf