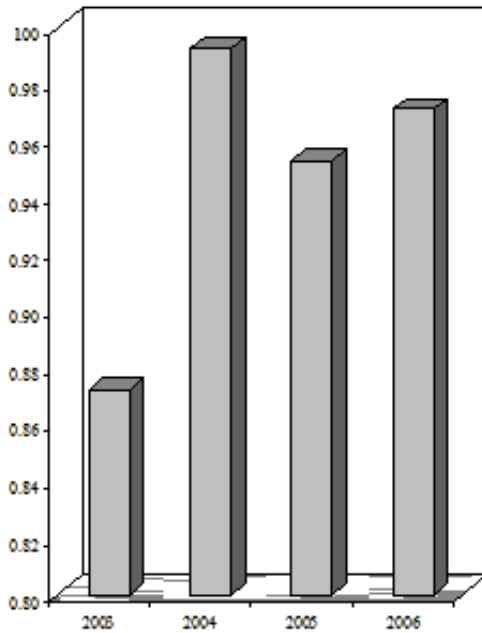


**District Court Probation  
Expenditure History**



## District Court Probation

Expenditures	2003 Actual	2004 Actual	2005 Budget	2006 Budget
Salaries & Wages	501,406	532,865	549,197	540,887
Personnel Benefits	112,786	123,221	138,322	145,672
Supplies	21,005	21,977	16,900	18,900
Other Services & Charges	233,171	310,237	244,703	261,564
Debt Service	3,794	3,794	3,700	3,900
Capital Outlay	-	-	-	-
Total Expenditures	872,162	992,094	952,822	970,923
Ending Fund Balance	173,536	77,478	134,463	113,733
Total Budget			1,087,285	1,084,656
Staffing / FTE	12.50	13.50	14.77	13.00

[Revenues](#)  
[Expenditures](#)

### Program Description:

Yakima County District Court Probation Services provides Yakima County District Court and Superior Courts with sentencing investigation, client supervision, treatment compliance review and community service placement for defendants with misdemeanor and gross misdemeanor cases.

The mission of the Yakima County Courts is to:

Provide effective and timely resolution of legal matters, assuring dignified and fair treatment to all participants while promoting respect for the justice system and maintaining the independence of the judiciary.

### Major Objectives:

- Provide probation service in the lower valley.
- Improve training for probation officers and support staff.
- Pursue partnerships within the county organization and with other Courts to provide better service to the public.

### Revenue/Expenditure Comment:

The Department's overall caseload may decline. Declining caseload also means declining revenue from probation fees. The Probation Department faces the challenge of improving the quality of service and supervision to protect public safety with a declining revenue stream.